



CORTE

Canaletto



SUPERFICIE COMMERCIALE

115,92 mq



SUPERFICIE BALCONE

23,00 mq



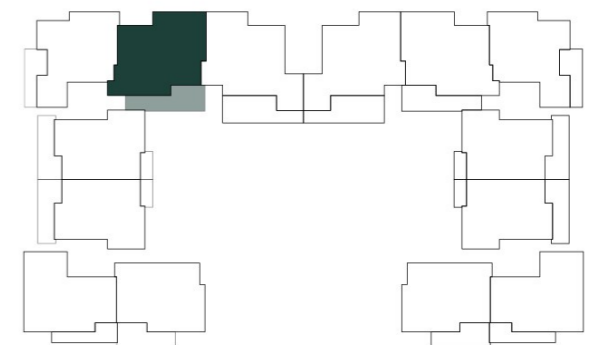
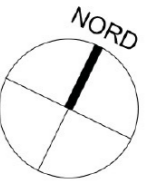
SUPERFICIE CANTINA

4,40 mq

Quadrilocale

CON CUCINA ABITABILE

20



PIANO PRIMO



CORTE

Canaletto



SUPERFICIE COMMERCIALE

115,92 mq



SUPERFICIE BALCONE

23,00 mq



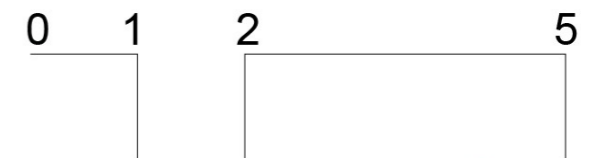
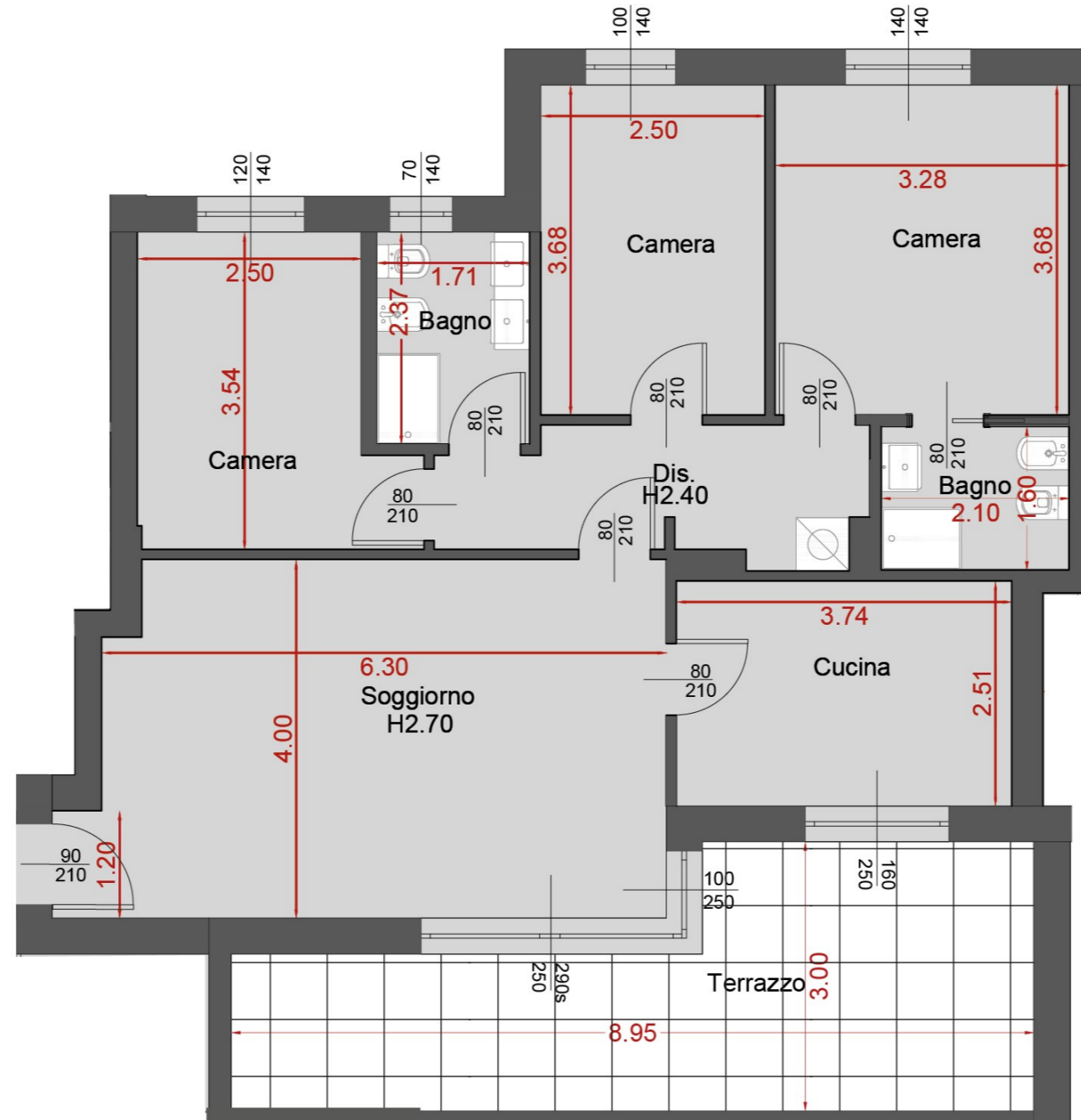
SUPERFICIE CANTINA

4,40 mq

Quadrilocale

CON CUCINA ABITABILE

20



PIANO PRIMO